

ANNEXATION MAP NO. 37
COMMUNITY FACILITIES DISTRICT NO. 2007-1
(PUBLIC SERVICES)

CITY OF COVINA
COUNTY OF LOS ANGELES
STATE OF CALIFORNIA



FILED IN THE OFFICE OF THE CITY CLERK THIS _____
DAY OF _____, 202__.

I HEREBY CERTIFY THAT THE WITHIN MAP SHOWING
PROPOSED BOUNDARIES OF ANNEXATION NO. 37 TO
COMMUNITY FACILITIES DISTRICT NO. 2007-1 (PUBLIC
SERVICES), CITY OF COVINA, COUNTY OF LOS ANGELES,
STATE OF CALIFORNIA, WAS APPROVED BY THE CITY
COUNCIL OF THE CITY OF COVINA AT A REGULAR
MEETING THEREOF, HELD ON THE _____ DAY OF
_____, 202__, BY ITS RESOLUTION NO.
_____.

FABIAN VELEZ, CHIEF DEPUTY CITY CLERK
CITY OF COVINA

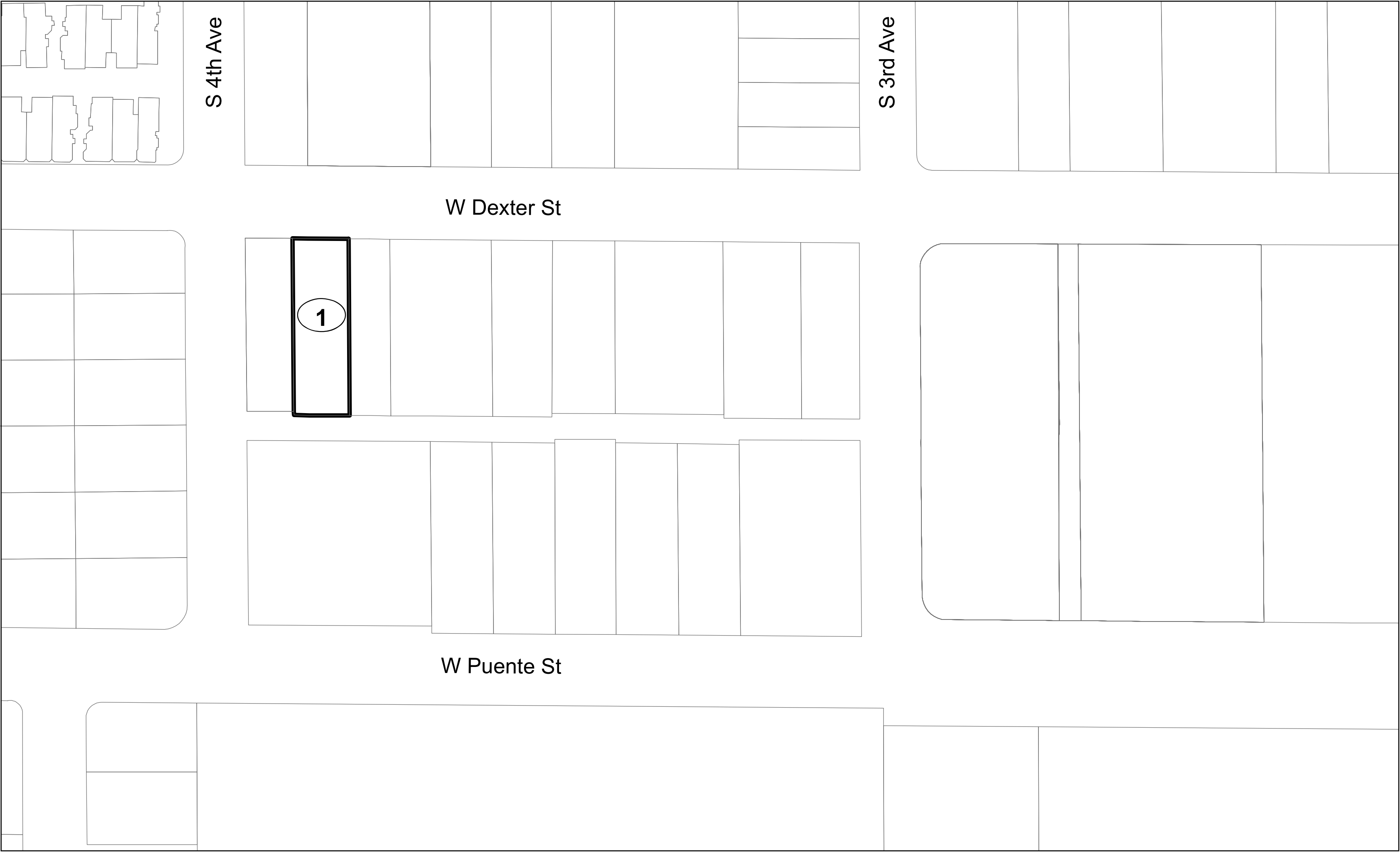
FILED THIS _____ DAY OF _____, 202__, AT THE
HOUR OF _____ O'CLOCK ____ M. IN THE BOOK _____
OF MAPS OF ASSESSMENT AND COMMUNITY FACILITIES
DISTRICTS, PAGE(S) _____ AND AS INSTRUMENT NO. _____
IN THE OFFICE OF THE COUNTY
RECORDER IN THE COUNTY OF LOS ANGELES, STATE OF
CALIFORNIA.

BY DEPUTY
COUNTY RECORDER
COUNTY OF LOS ANGELES
STATE OF CALIFORNIA


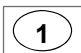
REFERENCE IS MADE TO THAT BOUNDARY MAP OF
COMMUNITY FACILITIES DISTRICT NO. 2007-1 (PUBLIC
SERVICES) OF THE CITY OF COVINA RECORDED WITH
THE LOS ANGELES COUNTY RECORDER'S OFFICE ON
MAY 18, 2007, AS DOCUMENT NO. 20071218337 IN THE
BOOK OF MAPS OF ASSESSMENT AND COMMUNITY
FACILITIES DISTRICTS.

THE LINES AND DIMENSIONS OF EACH LOT OR PARCEL
SHOWN ON THIS DIAGRAM SHALL BE THOSE LINES AND
DIMENSIONS AS SHOWN ON THE LOS ANGELES COUNTY
ASSESSOR'S MAPS FOR THOSE PARCELS LISTED.

THE LOS ANGELES COUNTY ASSESSOR'S MAPS SHALL
GOVERN FOR ALL DETAILS CONCERNING THE LINES AND
DIMENSIONS OF SUCH LOTS OR PARCELS.



LEGEND

-  ANNEXATION BOUNDARY
 MAP REFERENCE NUMBER

MAP REFERENCE NUMBER	ASSESSORS PARCEL NUMBER
1	8444-010-010

